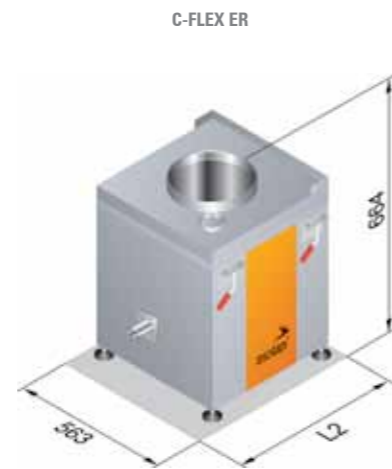
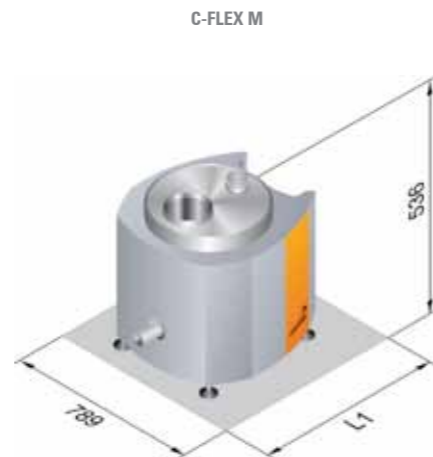


C-FLEX M/C-FLEX ER

TECHNICAL DATA

Technical data		
Dosing unit	M	ER
Type C-FLEX		
Motor(s)		
Connected load [kW]	0.1	0.35
Power supply [VDC]	220	220
Nominal rotation speed [min ⁻¹]	3200	3200
Gear ratios	23:1 (0.1 kW)	9:1 (0.25 kW) 23:1 (0.1 kW) 36:1 (0.1 kW)
Material hopper		
Volume [l]	10	30
Weight - volumetric [kg]	30	40
Weight - gravimetric [kg]	35	50
Extension module		
Volume [l]	23/50	25/50/70/100
Dosing capacity - Exchange module		
Throughput CFMS 65 - Single screw [l/h]	1 - 638	-
Throughput CFMT22 - Twin screw [l/h]	1 - 58	-
Throughput CFS65/CFS70 - Single screw [l/h]	-	0.7 - 5319
Throughput CFT22 - Twin screw [l/h]	-	0.5 - 168
Throughput CFT36 - Twin screw [l/h]	-	7 - 1066
Dimensions [mm]		
L1 (Screw length 350/400/450)	550/600/650	
L2 (Screw length 400/450/500)		655/705/755

Subject to technical changes



All dimensions in mm



Dosing units

C-FLEX M/ER

 think materials management



YOUR BENEFITS

- Full access to all components from the rear of the unit
- Flexible polyurethane hopper
- Offline cleaning via quick exchange system
- Intelligent sealing concept prevents dirt accumulation in the machine
- Simple removal of the screw via bayonet quick release lock
- Exchangeable hopper with stainless steel inserts as single or twin screw design
- High dosing capacity and dosing accuracy
- Superior processing window with dosing rates ranging from 1 to 6000 l/h
- Maintenance-free drive gear guarantees low operation costs

Over 130 agencies world-wide.

China, Beijing
Tel. +86 10 8588-6968
sales@motan-colortronic.com.cn

France, Evry
Tel. +33 1 608 690-18
info@motan-colortronic.fr

Germany, Isny
Tel. +49 7562 76-0
info@motan-colortronic.de

Italy, Milan
Tel. +39 0292 1633 62
info@motan-colortronic.it

Switzerland, Hunzenschwil
Tel. +41 62 889 29-29
info@motan-colortronic.ch

China, Guangzhou
Tel. +86 20 2886-6688-8081
sales@motan-colortronic.com.cn

Germany, Bünde
Tel. +49 5223 68544-0
info@motan-colortronic.de

Great Britain, Chesterfield
Tel. +44 1 246 260 222
sales@motan-colortronic.co.uk

Japan, Hiroshima
Tel. +81 82 928-6150
info@semco.jp

Thailand, Bangkok
Tel. +66 2 717-1088
info@motan.co.th

China, Taicang
Tel. +86 512 5357-7066
sales@motan-colortronic.com.cn

Germany, Friedrichsdorf
Tel. +49 6175 792-167
info@motan-colortronic.de

India, Chennai
Tel. +91 44 2247-2423
info@motan-colortronic.co.in

Singapore
Tel. +65 6873-7666
info@motan-colortronic.com.sg

USA, Plainwell
Tel. +1 269 685-1050
motanusa@motan-inc.com

www.motan-colortronic.com



C-FLEX M/C-FLEX ER DOSING UNITS

C-FLEX is ideally suited for dosing powders, pellets, granulates, regrinds, fibers, and flakes in both continuous and batching processes. motan's unique removable flexible hoppers provide two huge advantages over traditional dosing unit designs:

- the quick exchange hopper enables the user to clean and change materials in less than one minute.
- single and twin screw hoppers are interchangeable, allowing the user to configure the dosing unit for nearly any type of material in a matter of minutes.

In addition to high flexibility, high performance is assured since consistent screw fill is maintained and bridging eliminated through the use of a flexible polyurethane hopper that is activated by friction-free massaging rollers. The C-FLEX units can be integrated into both gravimetric and volumetric systems.

C-FLEX M



Quick exchange hopper C-FLEX M



C-FLEX ER



Quick exchange hopper C-FLEX ER



C-FLEX M

- C-FLEX dosing unit can be operated as single units or integrated into a multi-line system
- The housing design allows for compact arrangement of several feeders
- Integration in other motan mixing and dosing systems possible
- Large throughput range from 1 to 700 litres/h
- Hopper volume can be extended from 10 to 60 litres
- Non-free-flowing powders are moved via the flexible hopper walls and adjustable massage rollers

C-FLEX ER

- Steep inlet hopper walls with massage roller activation to prevent bridging
- The massage rollers are powered by an independent motor. They can be set to 48 different positions guaranteeing optimum dosing for every material
- Gentle operation of the rotating massage rollers – no abrasion at the polyurethane hopper
- Large screw intake guarantees constant screw filling
- Hopper volume can be extended from 30 to 300 litres

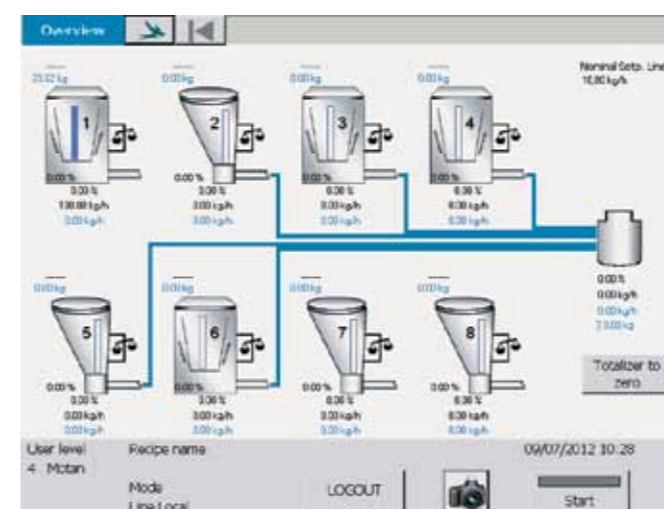
C-FLEX application



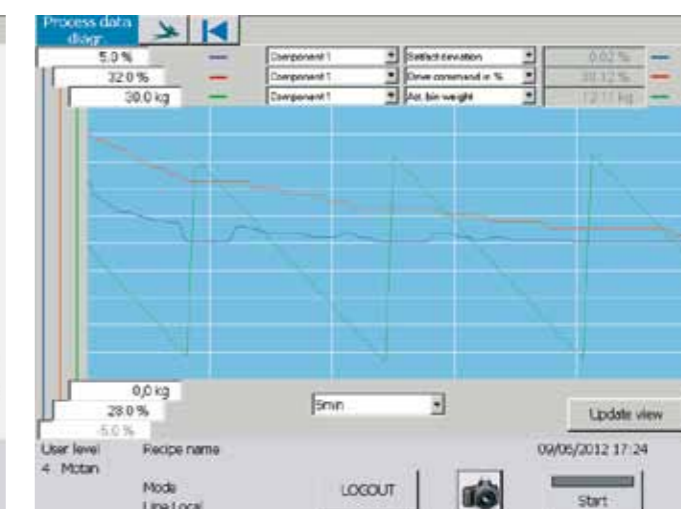
C-FLEX M installed on a co-rotating twin-screw extruder



Line overview C-FLEX



Process data diagram



GRAVInet GP control

The GRAVInet GP control is able to control multiple dosing modules/units and the appropriate refilling slides/butterfly valves or material loaders. The control offers user-friendly operation via a 12" colour graphic display with TFT touch screen. The GRAVInet GP incorporates comprehensive functions for operation and process control, recipe management, reporting for quality assurance as well as enhanced service functions and trend charts.

The dosing and mixing units being controlled can operate either independently or in tandem on a line. A control system to serve multiple lines is available.

FEATURES:

- Menu-driven control
- Messages in plain text
- Multiple level password protection
- Individual or line operation of the dosing and mixing stations
- Recipe storage
- Event and time protocols
- Multiple line control operation possible
- Graphic display of process parameters and equipment configuration possible
- Automatic calibration
- Print function
- Remote maintenance and/or software updates via VNC
- Modbus/TCP-interface

The menu-driven control is designed for easy operation. Messages and alarms are displayed in plain text, and multiple language options are available. Through the dynamic graphic process visualisation, the most crucial process data can be monitored and changed. GRAVInet GP technology stands out due to its modern, Ethernet-based open network architecture enabling standard networking with all other motan CONTROLnet controls.